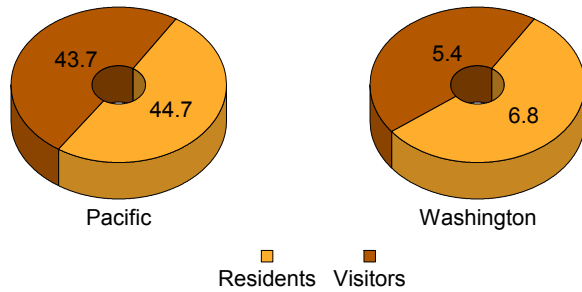


4rd Quarter 2009 Washington Domestic Air Travel Summary

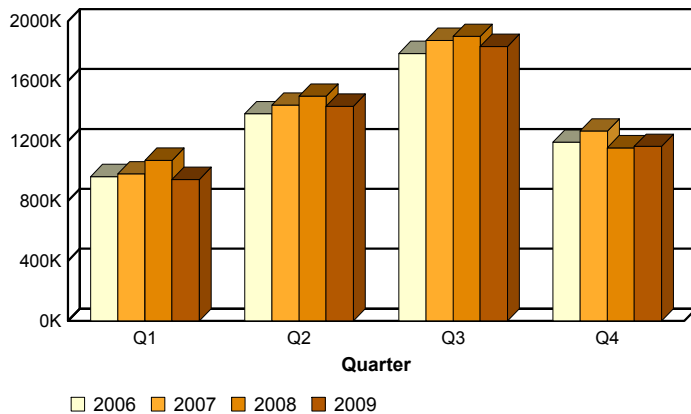
U.S. Domestic Air Arrivals to Washington and Pacific Census Division, 2009
(Millions)



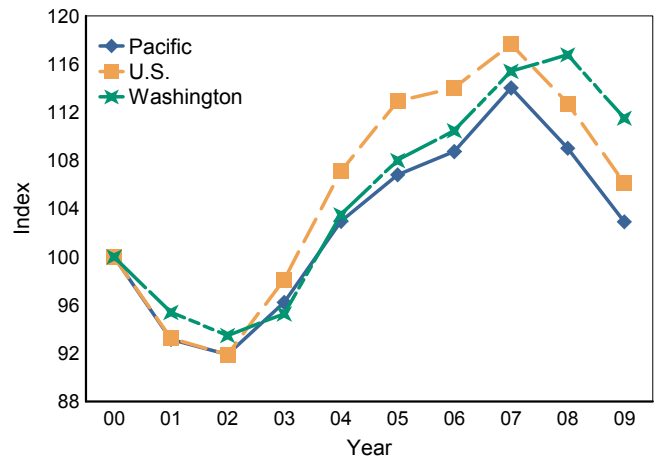
The Pacific Division includes the states of Alaska, California, Hawaii, Oregon and Washington.

Passenger air travel represents an important source of visitation to most states and metropolitan areas. Visitors that travel by air tend to stay longer at their destination and spend more than other travelers. The summary of air travel data shown here provides an overview of the trends, seasonality and the relative importance of air travel. The specific origins where trips were initiated, competitive destinations and market penetration rates can be the focus of more detailed analyses.

Visitor Arrivals to Washington by Quarter



Washington, Pacific Census Division and U.S. Visitor Arrivals, Year 2000 = 100



Findings are based on the Origin and Destination Survey of the U.S. Department of Transportation. This survey represents a 10 percent sample of the ticket itineraries of domestic passenger flights of U.S. air carriers.

More detailed analyses, including states and metropolitan areas, are available from Dean Runyan Associates, Inc.

Visitor Arrivals per 100 residents Washington and Pacific Census Division, 2009

